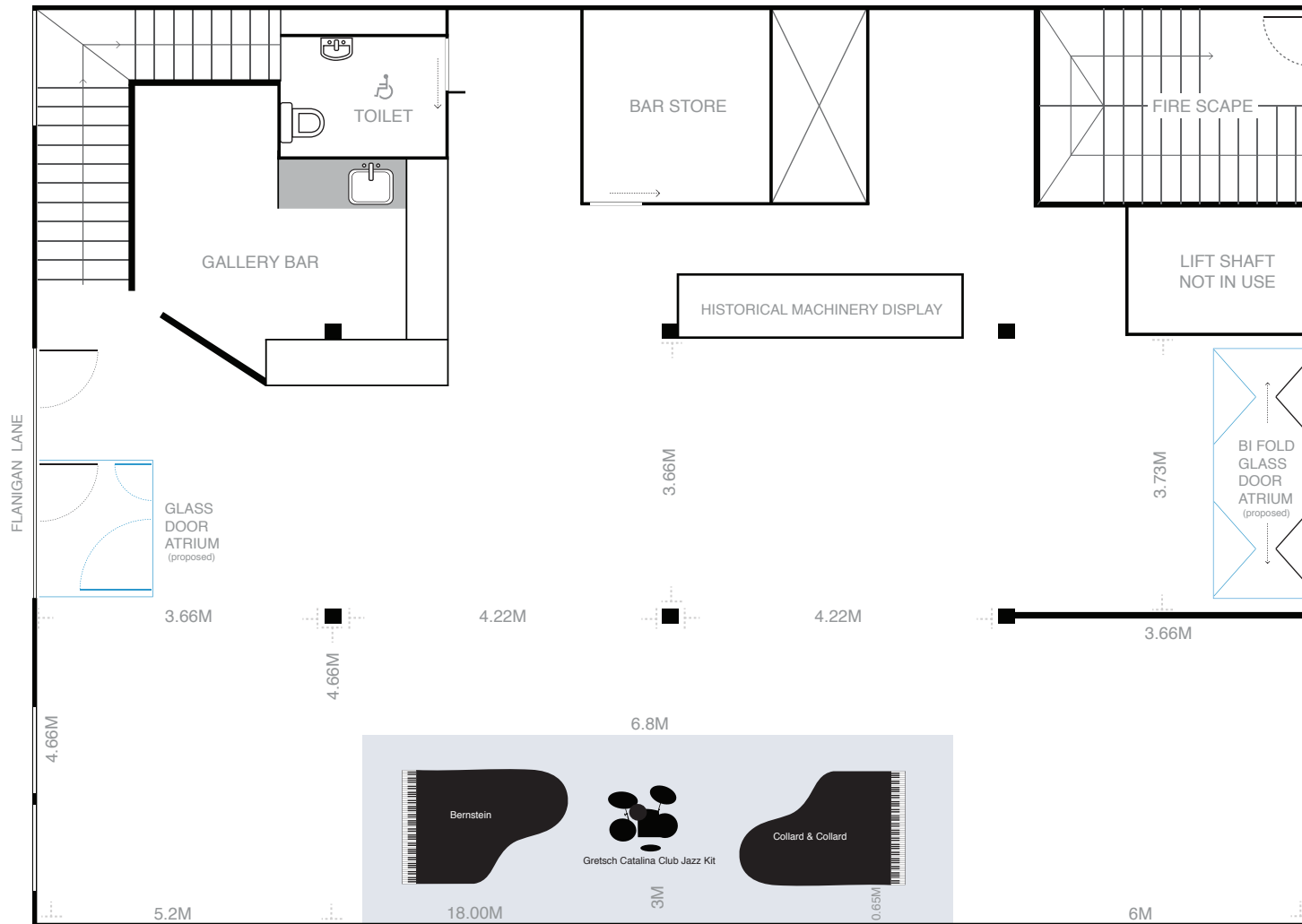




GUILDFORD LANE GALLERY

GROUND FLOOR PLAN



FLOOR FEATURES

| | |
|--------------------|---------------------------|
| FLOOR SPACE | 86.2M ² |
| WALL SPACE | 21.9M |
| CEILING HEIGHT | 3.5M |
| TOTAL SPACE | 108.1M² |

- POLISHED CONCRETE FLOOR
- WHITE BRICK WALLS
- EXPOSED TIMBER CEILING
- JOISTS, DOORS AND BEAMS
- TWO STREET ENTRANCES
- REVERSE CYCLE A/C
- PAINTING TRACK HANGING SYSTEM
- METAL HALIDE TRACK LIGHTING
- GRAND PIANO
- AUDIOVISUAL SOLUTIONS
- PERFORMANCE STAGE
- GALLERY BAR
- DISABILITY ACCESS
- DISABLED TOILET